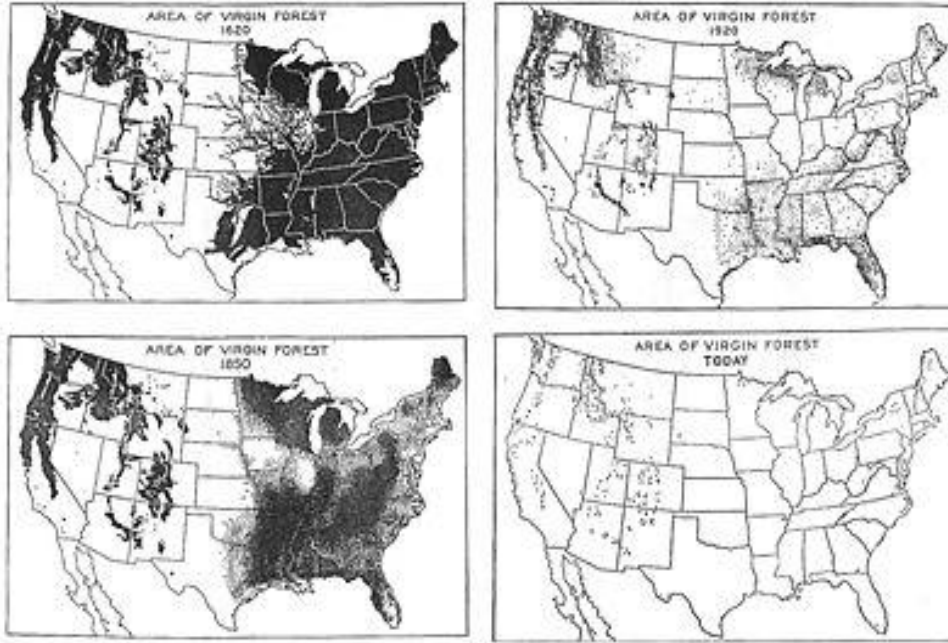


The Old-Growth Forest Network

America's *Next Idea*

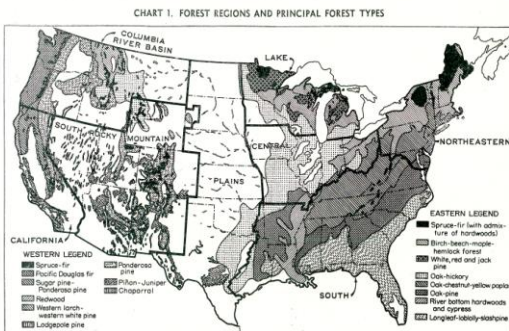
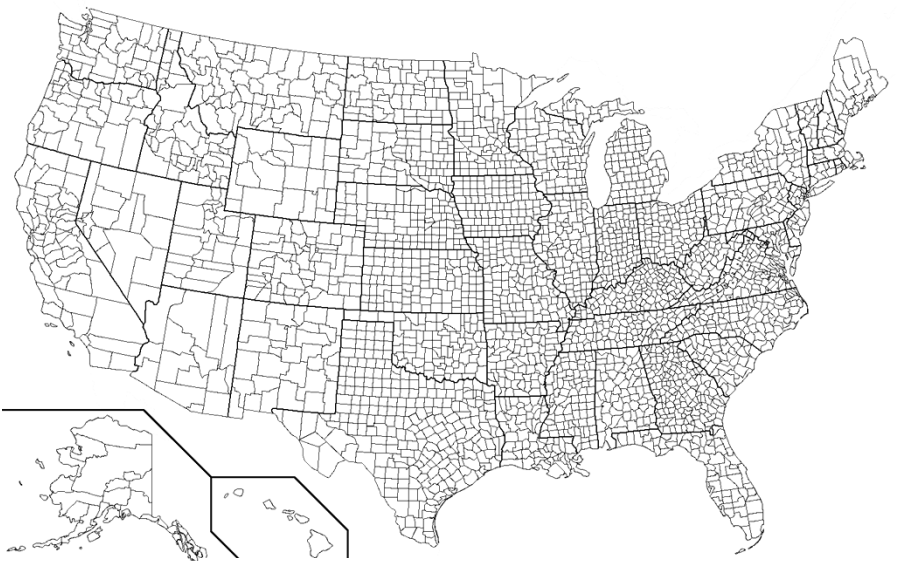
One forest in each county, open to the public, which will never again be logged.



Majestic forests that supported abundant animal populations were this nation's inheritance. Ninety-five percent of those forests have now been removed or radically altered. In this generation most people wishing to see an undisturbed, old-growth forest must travel for many miles to do so.

It is time now to set aside a few forests and allow them to recover their old-growth characteristics. These "future old-growth forests" will be our generation's gift to the generations coming after us. If we are able to reverse the decline in mature, native, forests we will be the first generation to have done so.

Of the 3,140 counties in the U.S. most, but not all, can support forest growth. The Old-Growth Forest Network will target the 2,370 counties where forests naturally grow.



www.oldgrowthforest.net

Joan Maloof, PhD

jemaloof@salisbury.edu; 410-251-1800

4701 Whitehaven Rd., Quantico, MD 21856