

Map produced for SPNHF by Chris Kane, 2/23/2015

**Mt. Sunapee State Park  
Proposed West Bowl Expansion**

NOTE: Locations of features are approximate, based on the best data available at the time the map was produced

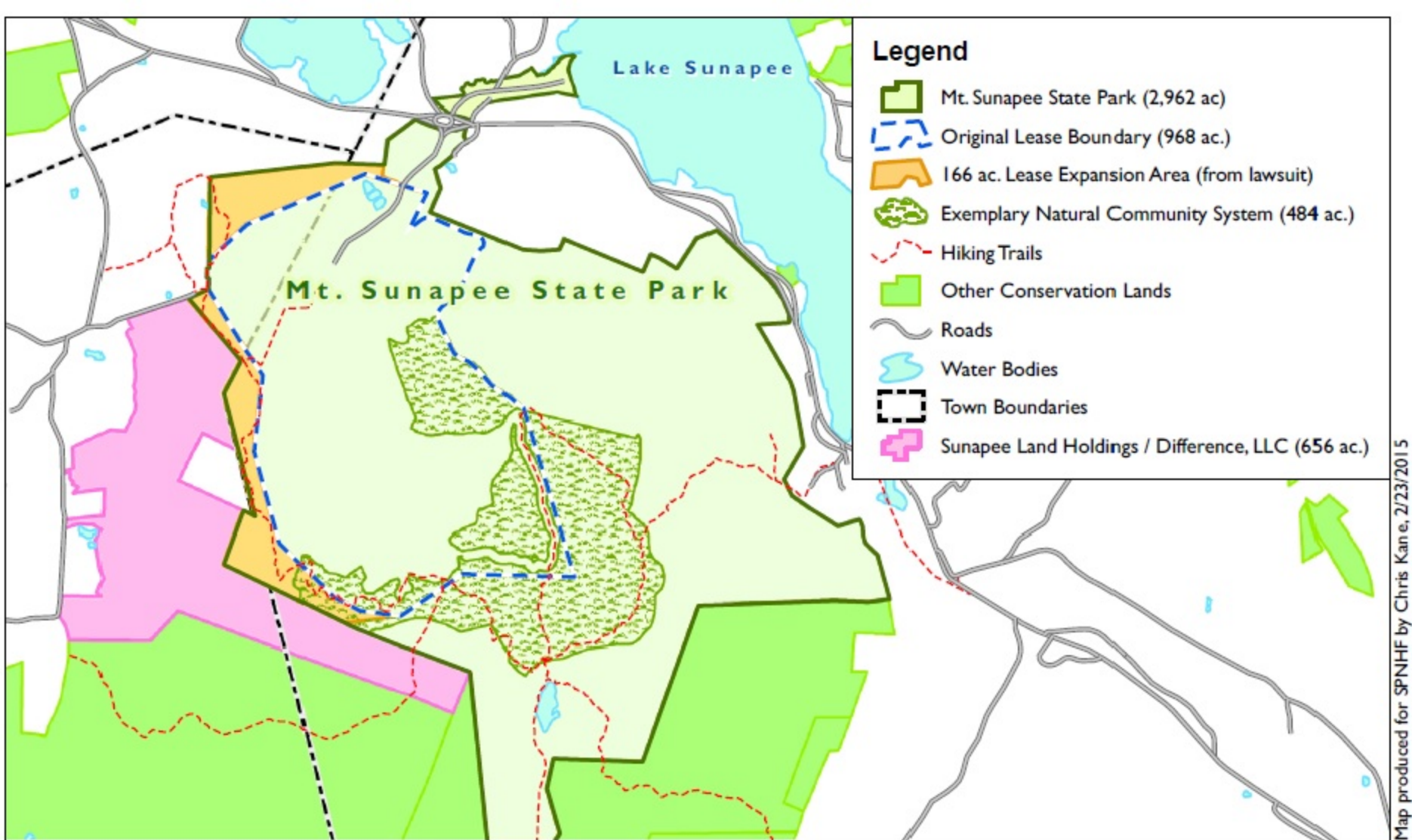


**Map I. Ski Area Lease Boundaries**



**Society for the Protection of NH Forests**  
 54 Portsmouth St.  
 Concord, NH 03301  
 (603) 224-9945  
[www.forestsociety.org](http://www.forestsociety.org)





Map produced for SPNHF by Chris Kane, 2/23/2015

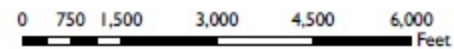
Mt. Sunapee State Park  
Proposed West Bowl Expansion

**Map 2. Exemplary Natural  
Community System**

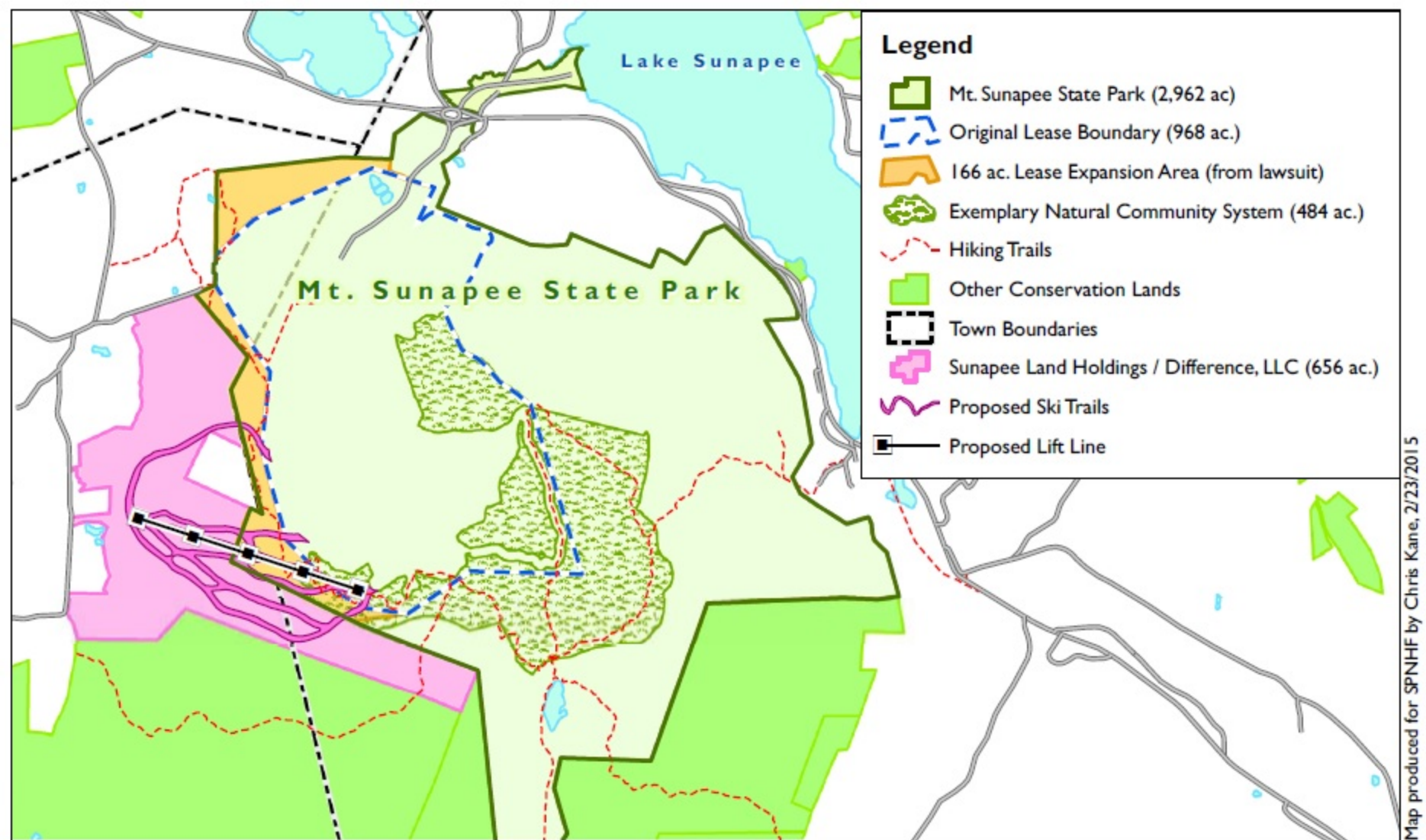
NOTE: Locations of features are approximate, based on the best data available at the time the map was produced



**Society for the Protection of NH Forests**  
54 Portsmouth St.  
Concord, NH 03301  
(603) 224-9945  
[www.forestsociety.org](http://www.forestsociety.org)







Map produced for SPNHF by Chris Kane, 2/23/2015

**Mt. Sunapee State Park  
Proposed West Bowl Expansion**

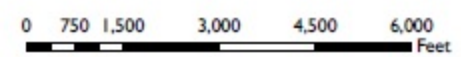
NOTE: Locations of features are approximate, based on the best data available at the time the map was produced



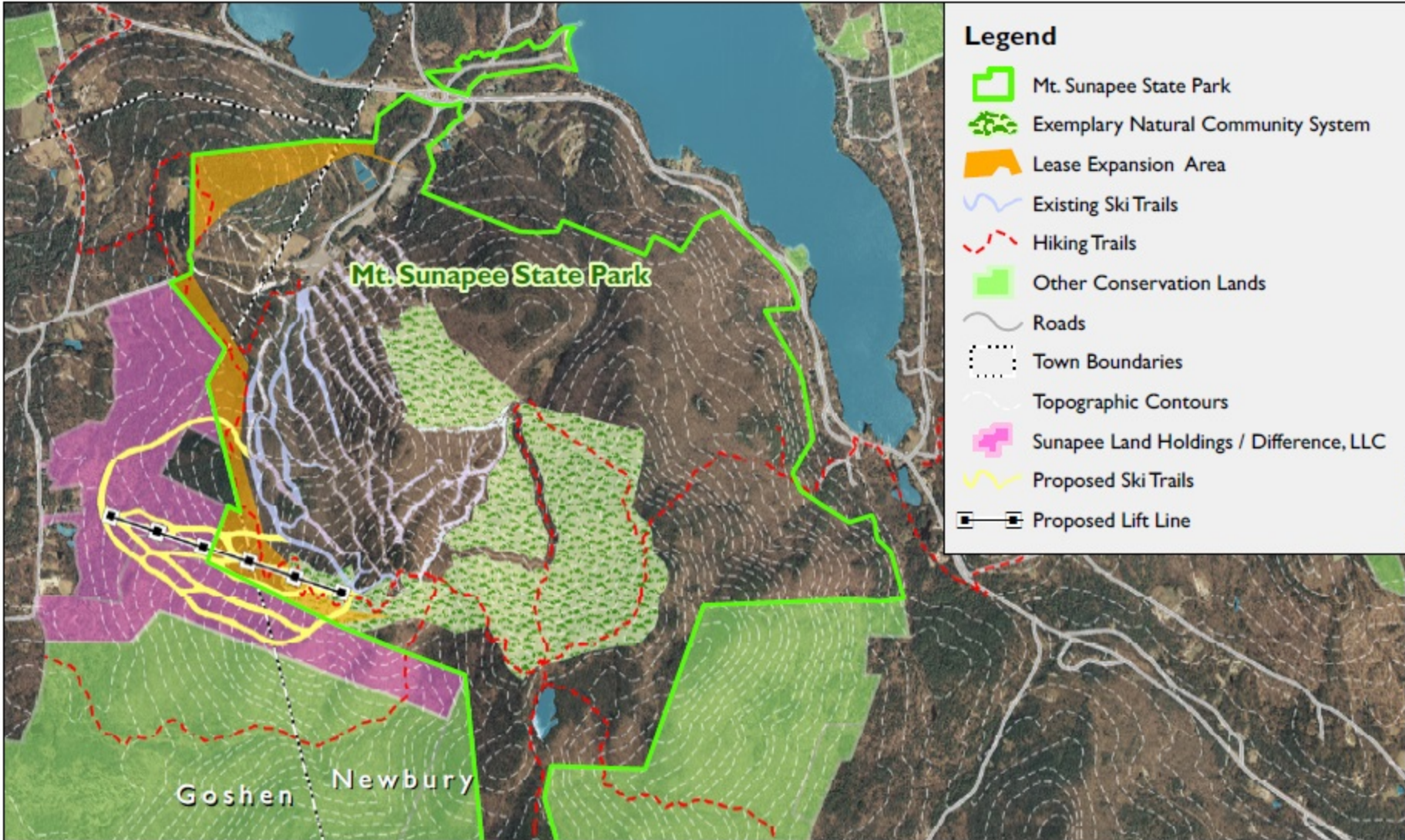
**Map 3. Proposed Ski Lift / Trail Expansion**



**Society for the Protection of NH Forests**  
 54 Portsmouth St.  
 Concord, NH 03301  
 (603) 224-9945  
[www.forestssociety.org](http://www.forestssociety.org)







Map produced for SPNHFF by Chris Kane, 2/23/15

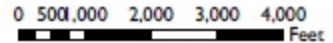
**Mt. Sunapee State Park  
Proposed West Bowl Expansion**

**Map 4. Aerial View of Proposed  
Ski Lift/Trail Expansion**

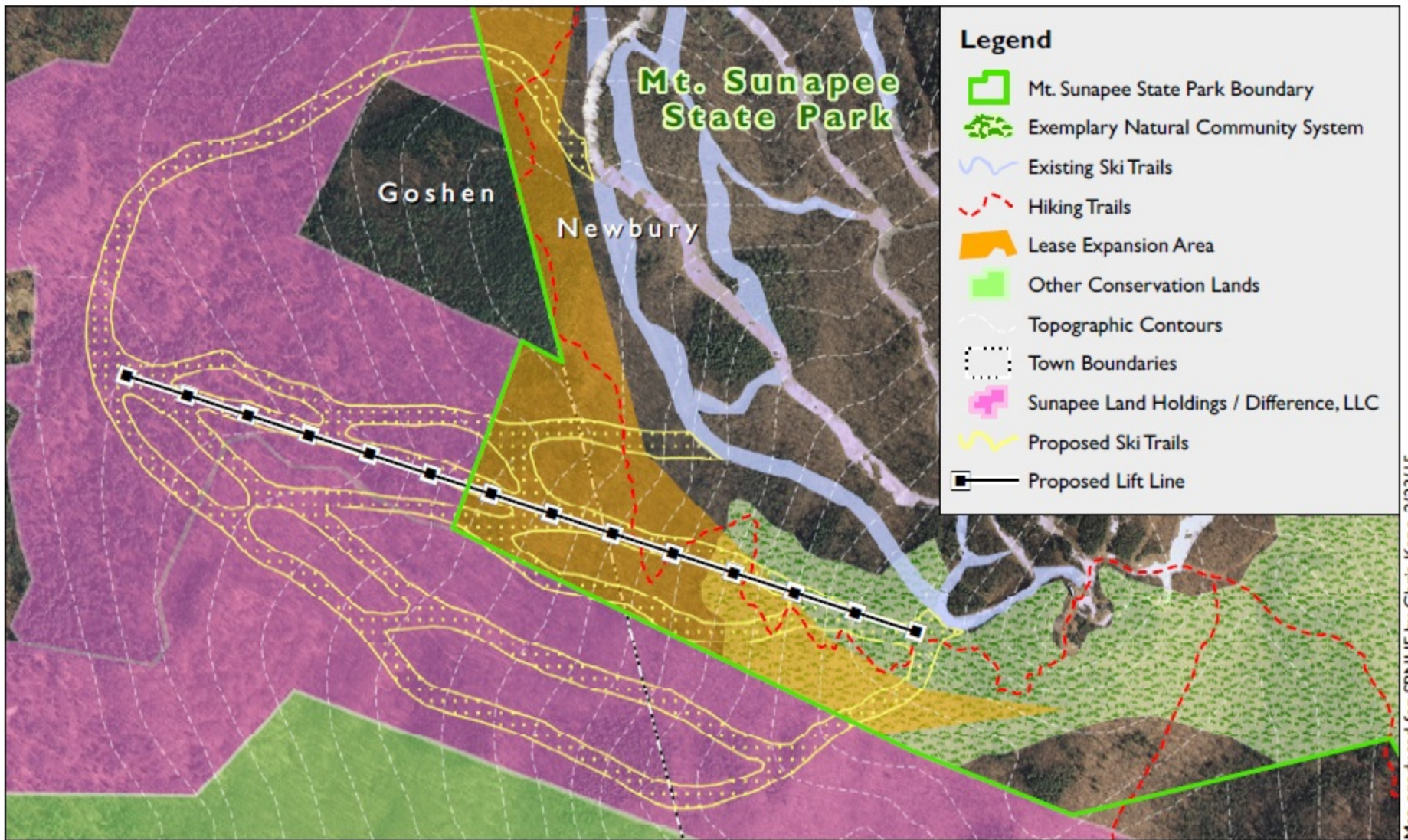
NOTE: Location of features is approximate and based on the best data available at the time the map was produced.



**Society for the Protection of NH Forests**  
 54 Portsmouth St.  
 Concord, NH 03301  
 (603) 224-9945  
[www.forestsociety.org](http://www.forestsociety.org)







Map produced for SPNH by Chris Kane, 2/23/15

**Mt. Sunapee State Park  
Proposed West Bowl Expansion**

**Map 5. Close-Up Aerial View  
of Proposed Expansion**

NOTE: Location of features is approximate and based on the best data available at the time the map was produced.



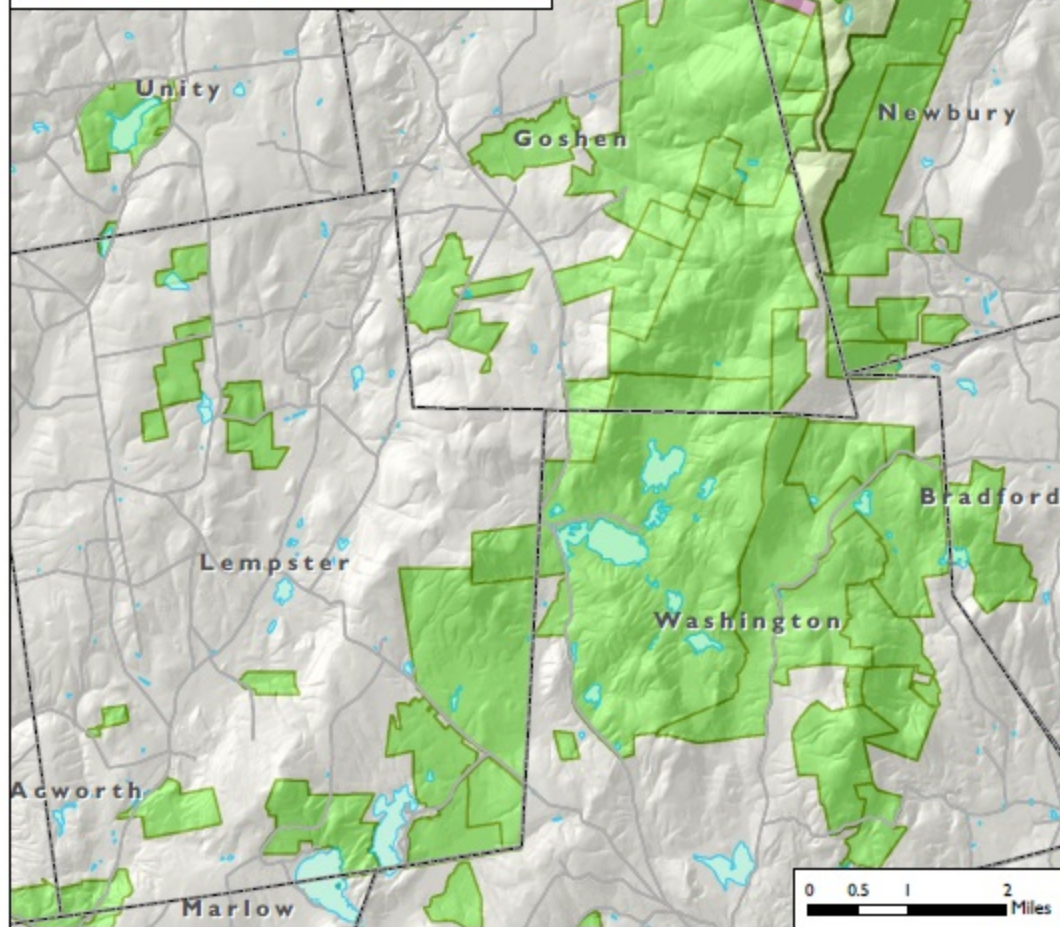
**Society for the Protection of NH Forests**  
 54 Portsmouth St.  
 Concord, NH 03301  
 (603) 224-9945  
[www.forestssociety.org](http://www.forestssociety.org)





## Legend

-  Mt. Sunapee State Park (2,962 ac)
-  Exemplary Natural Community System (484 ac.)
-  Other Conservation Lands
-  Town Boundaries
-  Sunapee Land Holdings / Difference, LLC (656 ac.)



Map produced for SPNHF by Chris Kane, 2/23/2015

Mt. Sunapee State Park  
Proposed West Bowl Expansion

NOTE: Locations of features are approximate, based on the best data available at the time the map was produced

## Map 6. Pillsbury-Sunapee Highlands Conserved Lands 1911-2015



**Society for the Protection of NH Forests**  
54 Portsmouth St.  
Concord, NH 03301  
(603) 224-9945  
[www.forestsociety.org](http://www.forestsociety.org)

