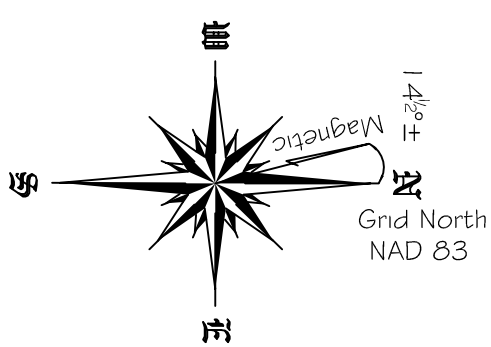


STATE OF NEW HAMPSHIRE
DEPARTMENT OF RESOURCES & ECONOMIC DEV.

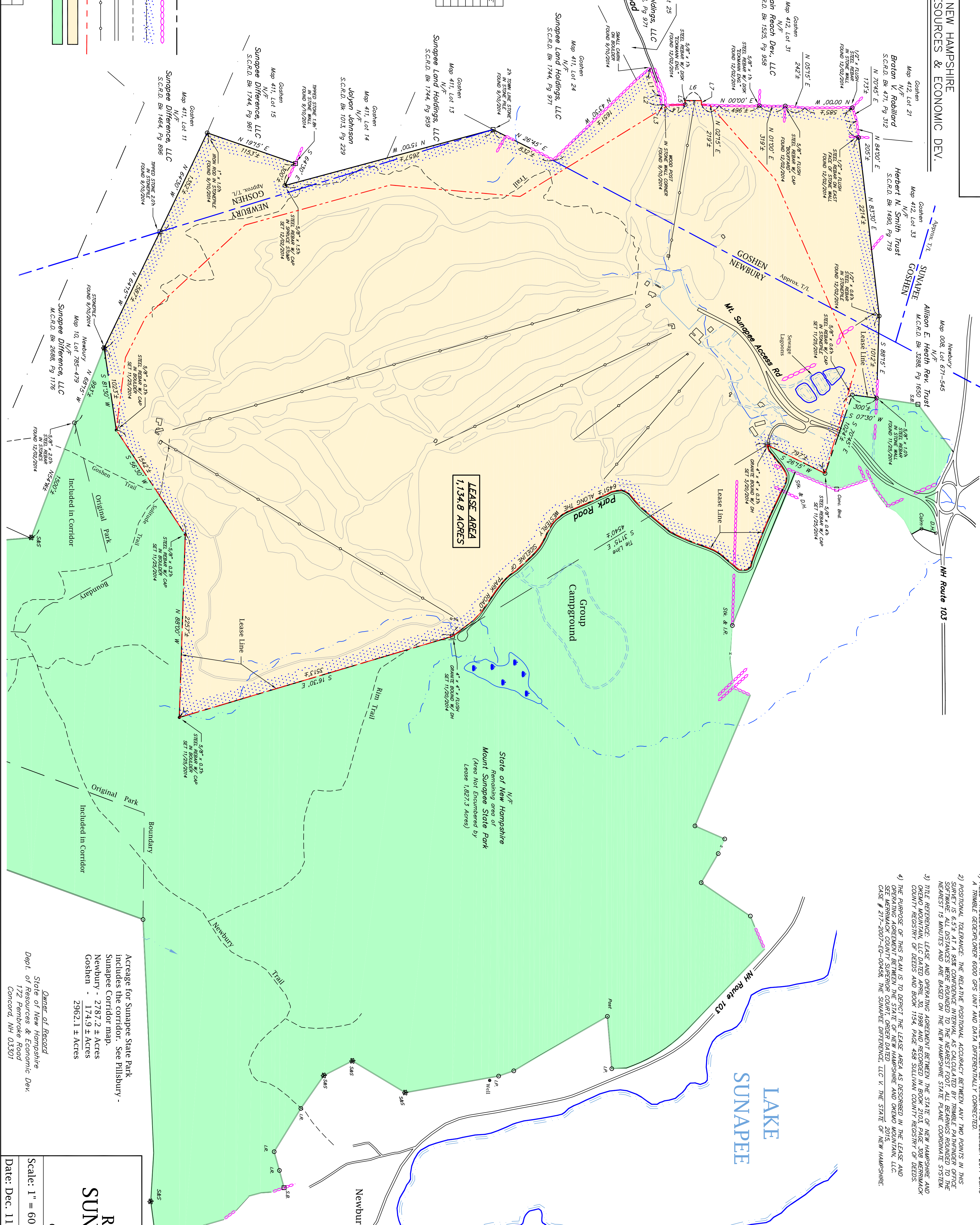


LINE	BEARING	DISTANCE
L1	N 69°15' E	377.±
L2	N 89°45' E	103.±
L3	N 10°15' E	47.±
L4	N 01°15' W	250.±
L5	N 89°45' W	202.±
L6	N 02°15' E	202.±
L7	S 89°45' E	50.±

LEGEND

- Lease Area Boundary
- Stonewall
- Wire Fence
- Trail
- Roads
- Lift Lines
- Original Lease Line
- Revised Lease Area
- Non-Lease State Park Land

ACAD DWG: Sunapee Lease.dwg
REMARKS: plot 2/05/2015

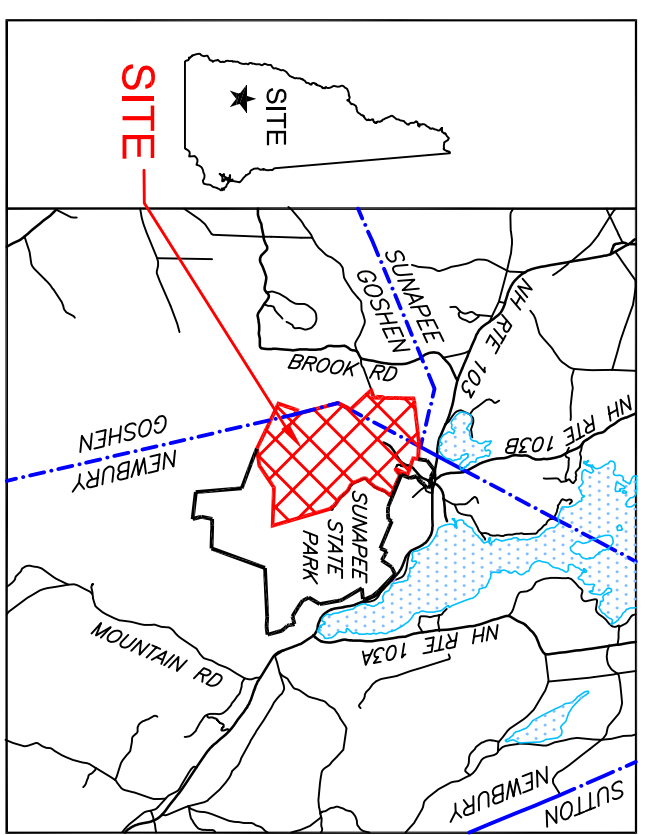


LEASE AREA
1,134.8 ACRES

State of New Hampshire
Remaining area of
Mount Sunapee State Park
(Area Not Encumbered by
Lease 1,827.3 Acres)

NOTES

- 1) FIELD PROCEDURE: SURVEY INFORMATION OBTAINED BETWEEN SEPTEMBER AND DECEMBER 2014 USING A TRIMBLE GROUNDWORKER 8000 GPS UNIT AND DATA DIFFERENTIALLY CORRECTED.
- 2) POSITIONAL TOLERANCE: THE RELATIVE POSITIONAL ACCURACY BETWEEN ANY TWO POINTS IN THIS SURVEY IS 6.5" AT A 95% CONFIDENCE INTERVAL AS CALCULATED BY TRIMBLE PATHFINDER OFFICE SOFTWARE. ALL DISTANCES WERE ROUNDED TO THE NEAREST FOOT. ALL BEARINGS ROUNDED TO THE NEAREST 15 MINUTES AND ARE BASED ON THE NEW HAMPSHIRE STATE PLANE COORDINATE SYSTEM.
- 3) TITLE REFERENCE: LEASE AND OPERATING AGREEMENT BETWEEN THE STATE OF NEW HAMPSHIRE AND OKEMO MOUNTAIN, LLC DATED APRIL 30, 1998 AND RECORDED IN BOOK 2103, PAGE 308 MERRIMACK COUNTY REGISTRY OF DEEDS AND BOOK 1754, PAGE 498 SULLIVAN COUNTY REGISTRY OF DEEDS.
- 4) THE PURPOSE OF THIS PLAN IS TO DENOTE THE LEASE AREA AS DESCRIBED IN THE LEASE AND OPERATING AGREEMENT BETWEEN THE STATE OF NEW HAMPSHIRE AND OKEMO MOUNTAIN, LLC AND SET MERRIMACK COUNTY SUPERIOR COURT, ORDER DATED CASE # 211-2001-EG-00483, THE SUNAPEE DIFFERENCE, LLC V. THE STATE OF NEW HAMPSHIRE.



REVISED LEASE AREA
SUNAPEE STATE PARK

REVISIONS

DATE	ADD OWNER OF RECORD, TAX ID #, SULL. CO. RECORDING AREA, CERTIFICATION	BY
2/9/15		DK

Newbury Tax Lot 013-386-092
Goshen Tax Map 412, Lot 32
NH Route 103
Newbury, Merrimack Co., &
Goshen, Sullivan Co., New Hampshire

Owner of Record
State of New Hampshire
Dept. of Resources & Economic Dev.
172 Pembroke Road
Concord, NH 03301

Scale: 1" = 600'
Date: Dec. 11, 2014
Surveyed by: D.R.E.D.

Acreage for Sunapee State Park
Includes the corridor. See Pillsbury -
Sunapee Corridor map.
Newbury - 2787.2 ± Acres
Goshen - 1749.9 ± Acres
2962.1 ± Acres