

Welcome to Unity Mountain Trail !



This hiking trail was created to give people an opportunity to enjoy, explore, and learn about the natural and cultural heritage of Sullivan County.

Keep in mind this trail is used by hikers, hunters, nature watchers, school groups, and many others. Please be respectful of all users by following these guidelines.

- Please do not litter. This is a carry in/ carry out trail.
- Please pick up after your dog.
- Motorized vehicles are prohibited.
- Campfires are prohibited.



Trail Description: Built entirely on public lands in the Town of Unity, the Unity Mountain Trail is a four mile long hiking/walking path showcasing the varied cultural and natural histories of Sullivan County. From its western end at the Sullivan County Complex the trail climbs steadily past a small pond before crossing the 2nd NH Turnpike and continuing gradually upward along the flanks of Unity Mountain before dropping down and following the shore of Marshall Pond. The trail's eastern end is located at Mica Mine Rd, opposite the historic Marshall family cemetery. A scenic overlook near the summit of Unity Mountain affords hikers a spectacular view. Birds and other wildlife species are often spotted along the trail.



Directions

From Claremont: Take Chestnut St (2nd NH Turnpike) toward Unity, approximately 4.8 miles. At the Sullivan County Complex sign, continue straight onto County Farm Rd. Kiosk or continue to Mica Mine Rd. Kiosk

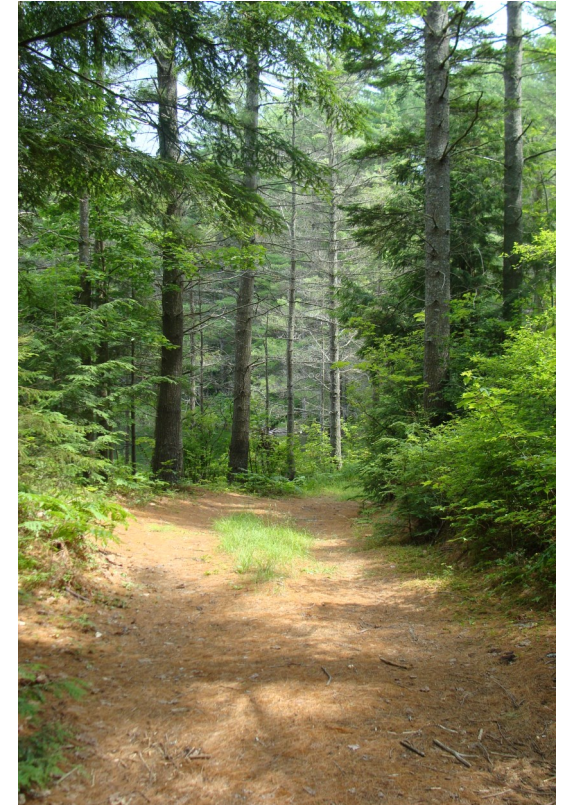
From Lempster and Route 10: Take 2nd NH Turnpike toward Claremont 10.1 miles.

There are three parking areas:

1. *Up the hill from the County Health Care Staff parking lot at the County Complex*
2. *On 2nd NH Turnpike near DOT Salt Shed.*
3. *On Mica Mine Rd.*

See the Map for trailhead locations.

Sullivan County Trails



Contact Us

Sullivan County Natural Resources
Sullivan County Complex
(603) 542 - 4891
Ichute@sullivancountynh.gov
www.sullivancountynh.gov
Facebook: NHSCCD



Thank you for helping us protect Sullivan County Lands!

Unity Mountain Trail



This project was funded in part by the Federal Highway Administration Recreational Trails Program through the NH Bureau of Trails.

